



SOLU

# COMPANY PROFILE





## ABOUT US



At the forefront of revolutionizing the IT industry, we are driven by talented young people who blend cutting-edge technology with philanthropic values. Our mission is to tackle real-world challenges with smart, sustainable solutions that enhance operational efficiency and contribute to the greater good.

By fostering a culture of innovation, collaboration, and social responsibility, we empower businesses and communities to thrive in an ever-changing landscape. Through strong partnerships and focus on excellence, we drive growth and impact. Together, we create a future where technology drives progress and serves humanity.

### VALUE

We prioritize cost-effective and worthy solutions, ensuring your investment always pays off. Our dedicated customer support is available at every step of the journey. Additionally, we offer reliable warranty and maintenance programs and are committed to delivering exceptional aftersales service.

### VISION

To be the leader in the technology industry, driving innovation that aligns with philanthropic values.

### MISSION

We are driven by a commitment to continuous growth and giving back to the community. Our mission is:

- To cultivate a talented workforce that is constantly evolving.
- To provide free IT education, empowering the next generation of innovators.
- To expand our business portfolio in IT, ensuring cutting-edge solutions for our clients.
- To uphold and integrate religious and humanistic values in every aspect of our business.
- To establish a global network of industry-leading partners.



## SERVICES



### AI & IoT Solution

Providing Smart IoT Solutions That Ensure Seamless Connectivity, Enhance Operational Efficiency, And Drive Transformative Innovation For Businesses.



### Product Dev

Designing Innovative, Custom Applications To Simplify Workflows, Boost Productivity, And Meet Evolving Business Demands With Precision.



### Business Platform

Delivering Integrated Platforms That Optimize Processes, Drive Scalability, And Empower Businesses For Long-Term, Sustainable Growth.



### Education Platform

Equipping Teams With Cutting-Edge Technology Knowledge To Foster Creativity, Collaboration, And Success In A Fast-Evolving Digital World.



### Software Dev

Building Tailored Software Solutions That Streamline Operations, Accelerate Business Success, And Unlock New Growth Opportunities.



## OUR PRODUCT



Serelo Smart Office

In today's fast-paced workplaces, Serelo optimizes security and resource management with advanced solutions. Our cutting-edge Visitor Management System (VMS) powered by RFID and People Tracking, provides real-time office monitoring for seamless operations.



### OUR FEATURES

- VMS (Visitor Management System)
- Meeting Room Reservation
- Desk Reservation
- People Tracking
- Package Delivery Management



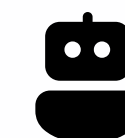
### TECHNOLOGY

php

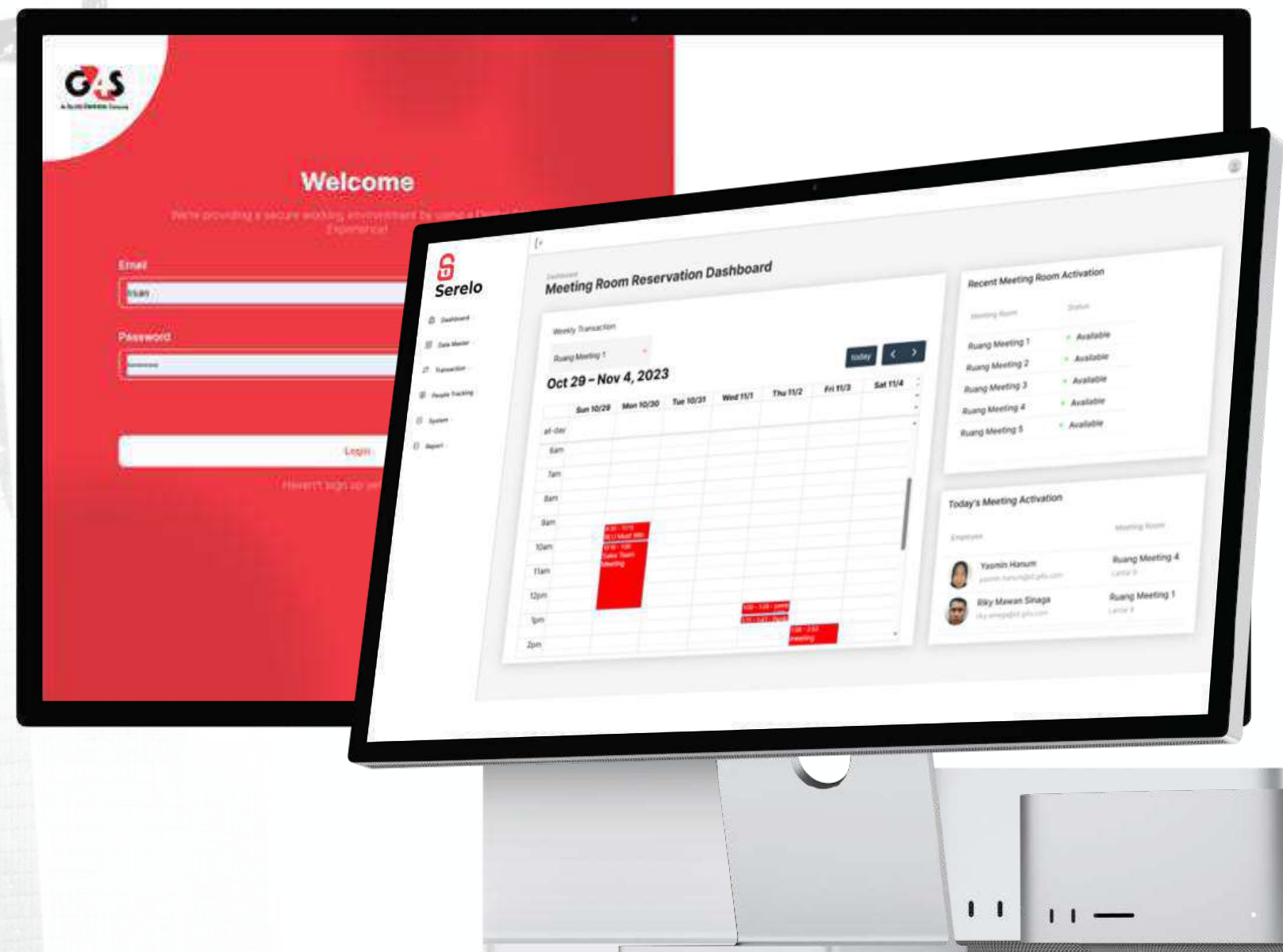
MySQL

Vue JS

Flutter



Artificial Intelligence





## OUR PRODUCT



In bustling spaces like offices, sports centers, and transportation hubs, managing personal belongings can be a challenge. Serelock transforms storage with a smart, secure locker system, delivering convenience and peace of mind for busy environments and individuals on the move.



### OUR FEATURES

- RFID Access
- QR Code Integration
- Fingerprint Authentication



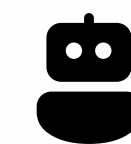
### TECHNOLOGY



Golang



Vue JS



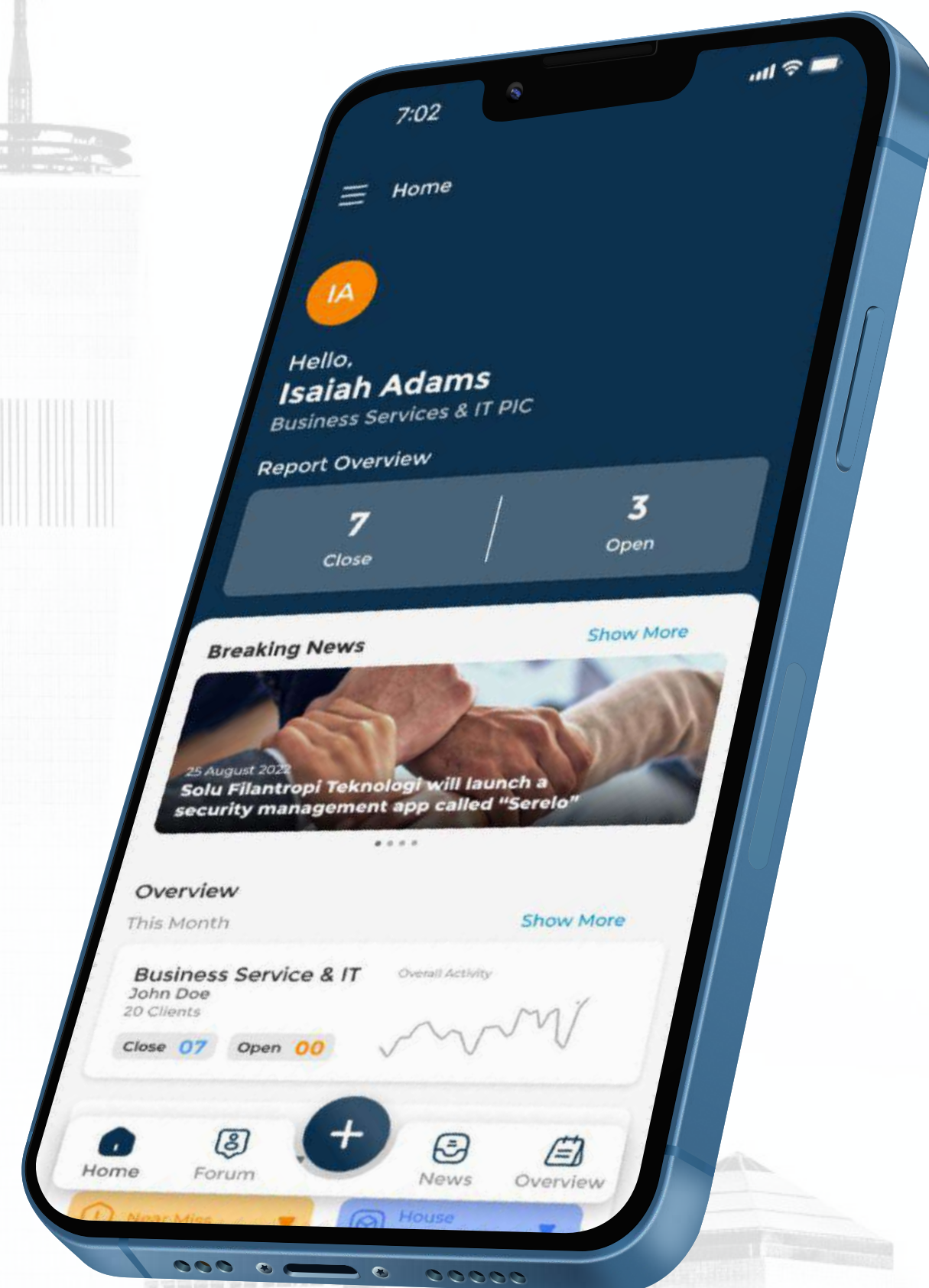
Artificial Intelligence



IOT



## OUR PRODUCT



Amna is a groundbreaking solution for streamlining Occupational Health and Safety (OHS) management. It empowers employees to report hazards, track risks, and foster a proactive safety culture. With news and forum features, Amna ensures seamless communication and real-time updates across the HSE Center.



### OUR FEATURES

- Hazard Reporting
- Vehicle Safety Checklist
- Company News
- Safety Forum



### TECHNOLOGY



Golang



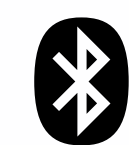
NFC



Vue JS



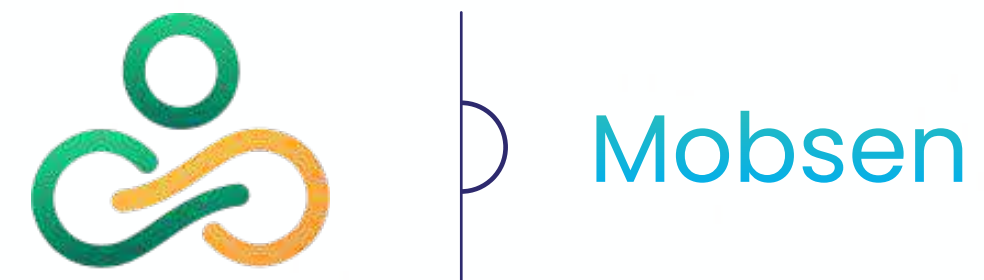
PostgreSQL



Bluetooth



## OUR PRODUCT



Mobsen is an all-in-one HRIS software that streamlines employee management with ease. From automated payroll processing to seamless attendance tracking, Mobsen simplifies HR tasks and eliminates errors. Manage tax calculations effortlessly and centralize your employee administration for maximum efficiency.



### OUR FEATURES

- Employee Management
- Attendance Tracking
- Leave Management
- Reimbursement Management
- Payroll & Salary Processing

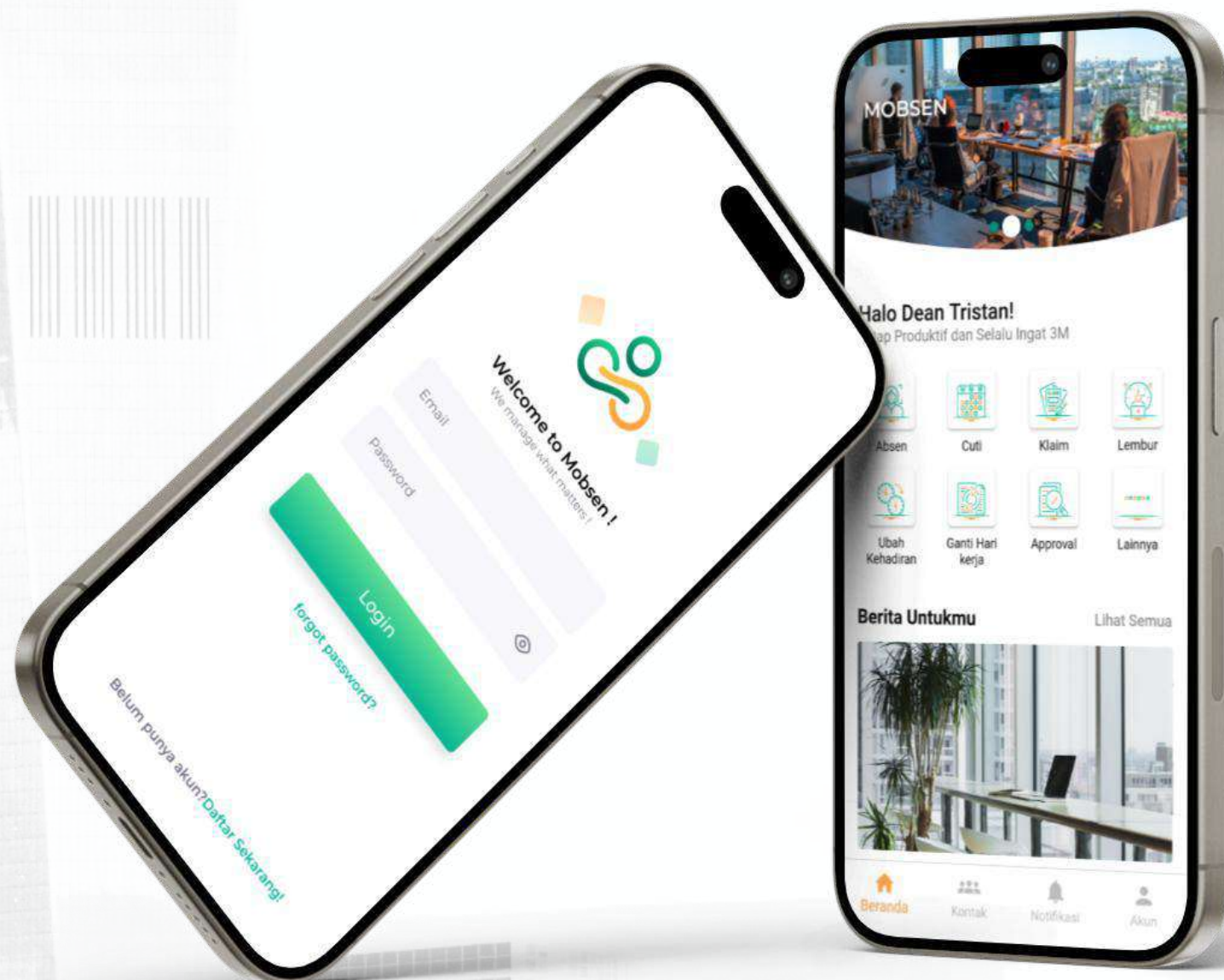


### TECHNOLOGY

**php**

MySQL

 Flutter





## OUR PRODUCT



Caring for the elderly comes with unique challenges, especially in monitoring their health. LifeTrace simplifies this with a wearable bracelet that tracks real-time blood pressure and heart rate. In case of a fall or abnormal vitals, instant alerts are sent to family members, ensuring your loved ones are always cared for and never out of reach.



### OUR FEATURES

- Blood Pressure Monitoring
- Heart Rate Monitoring
- Fall Detection Alerts



### TECHNOLOGY





## OUR PRODUCT



PiON ensures safety in high-risk environments like construction sites with AI-powered detection of helmets and shoes. Integrated with facial recognition and turnstile systems, it blocks unauthorized or non-compliant access, creating a secure and regulated workspace.



### OUR FEATURES

- FR (Face Recognition) Detection
- Safety Helmet Detection
- Safety Shoes Detection



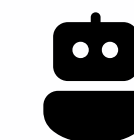
### TECHNOLOGY

*php*

Express

**JS**

MySQL



Artificial Intelligence



## OUR PRODUCT

### Smart Heavy Vehicle

Our Smart Heavy Vehicle System was designed with the mining industry in mind, tackling the challenge of harsh environmental conditions and maximizing operational efficiency. With real-time tracking, driver behavior monitoring, and predictive maintenance, our solution ensures safety, productivity, and longevity for vehicles working in extreme environments.

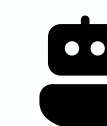


#### OUR FEATURES

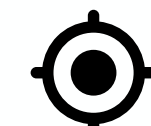
- Equipment utilization monitoring
- Real-time GPS tracking
- Driver behavior monitoring
- Fuel & maintenance scheduling
- Weighing operation monitoring



#### TECHNOLOGY



Artificial Intelligence



GPS Tracker



Fuel Sensor



Weight Sensor



IoT



# OUR PRODUCT

## Smart Building Management

Our Smart Heavy Vehicle System was designed with the mining industry in mind, tackling the challenge of harsh environmental conditions and maximizing operational efficiency. With real-time tracking, driver behavior monitoring, and predictive maintenance, our solution ensures safety, productivity, and longevity for vehicles working in extreme environments.

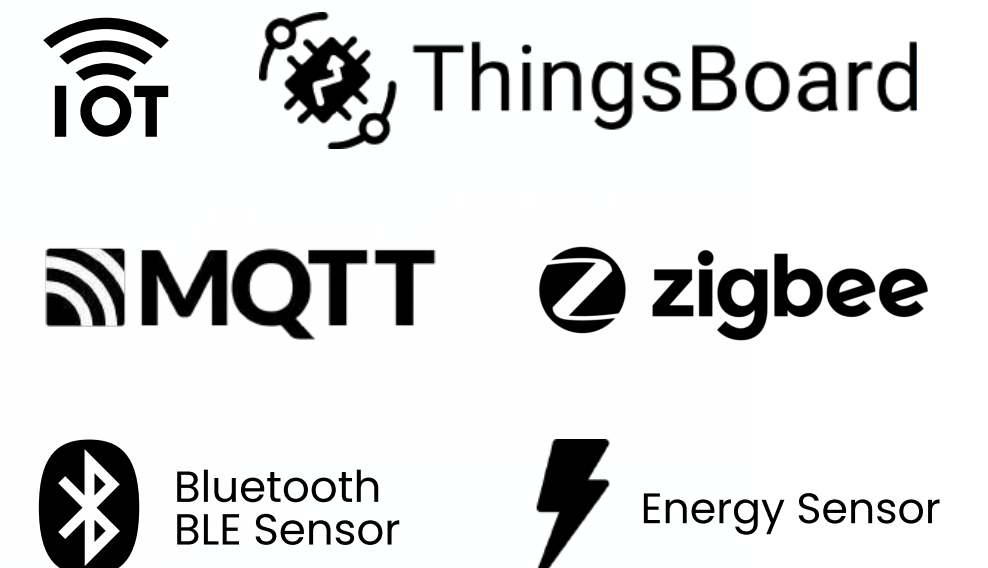


### OUR FEATURES

- Real-time monitoring
- Customizable alerts & notifications
- Remote access & management
- Regulatory compliance
- Data analytics & reporting



### TECHNOLOGY





## OUR PRODUCT



## Smart Energy Management

Energy management isn't just about tracking consumption—it's about making smart decisions in real time. With our Smart Energy Management system, you get full visibility of your energy use, enabling you to optimize consumption and reduce costs. Real-time data, early hazard detection, and actionable reports ensure your systems run smoothly and efficiently.



### OUR FEATURES

- Real-time energy consumption monitoring
- Temperature monitoring
- Early hazard detection
- Dashboard & reporting



### TECHNOLOGY

 **MQTT**

 Energy Meter

 ThingsBoard



## OUR PRODUCT



### Indoor Positioning System

Say goodbye to the days of misplacing items or wasting time searching. Our Indoor Positioning System ensures every asset is accounted for, tracked in real-time, and optimized for maximum efficiency. Whether you're managing inventory or maximizing warehouse operations, our system provides the insights you need to stay on top of things.

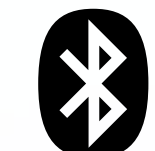


#### OUR FEATURES

- Real-time tracking
- Enhanced operational efficiency
- Dashboard & reporting



#### TECHNOLOGY



Bluetooth  
BLE Sensor



ThingsBoard



## OUR PRODUCT



### Smart Wearable

In the demanding offshore environment, safety is paramount. Our Smart Wearable solution keeps workers safe by monitoring health metrics in real-time and sending alerts for any abnormalities. Whether it's detecting a fall or a sudden spike in heart rate, our system ensures rapid response, reducing risks and preventing accidents.



#### OUR FEATURES

- Health monitoring
- Safety alerts
- Rugged design for tough environments



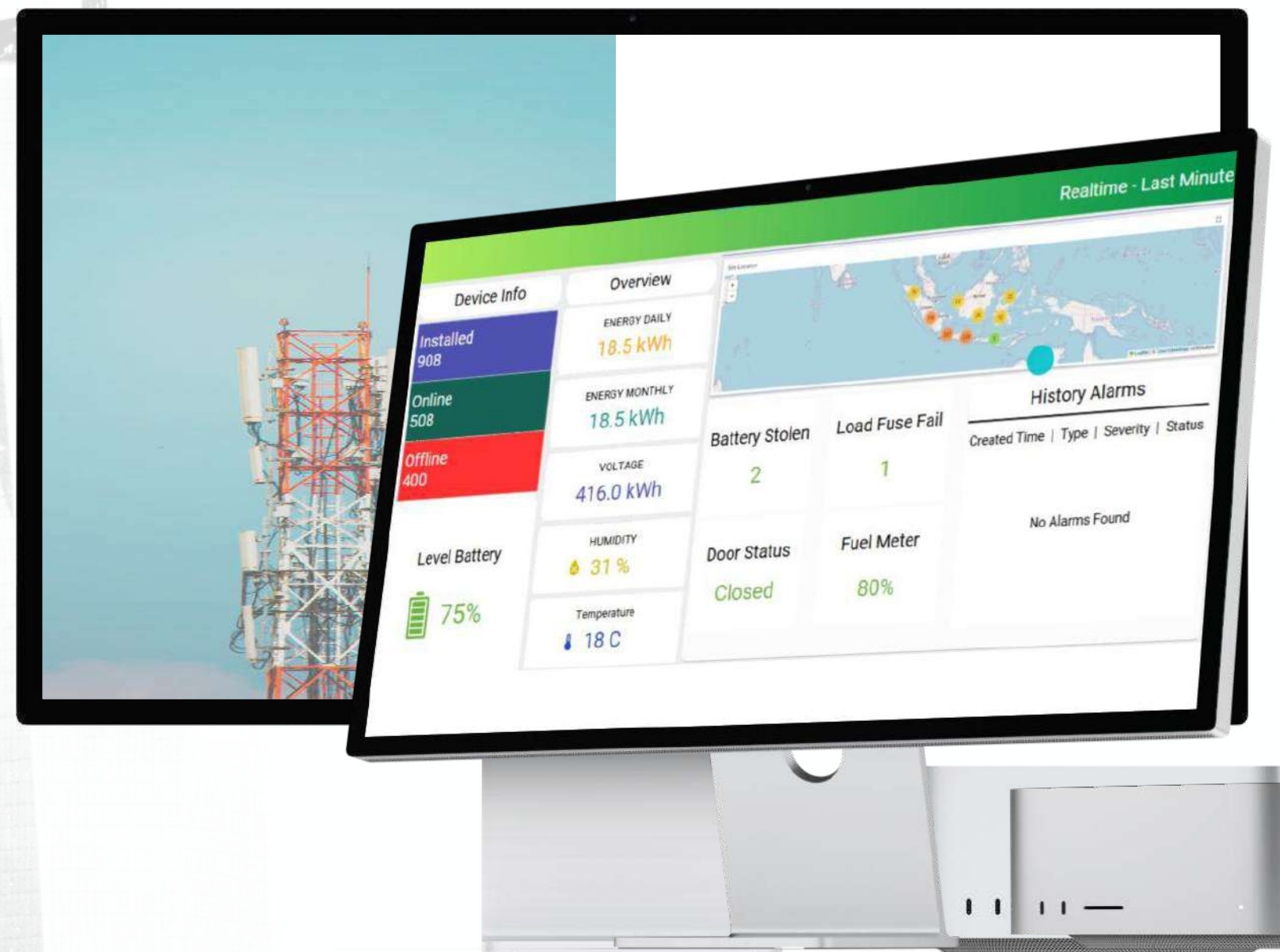
#### TECHNOLOGY



ThingsBoard



## OUR PRODUCT



## BTS Tower Monitoring

Our IoT-powered BTS Tower Monitoring system enables seamless, real-time oversight of tower operations, ensuring optimal performance, enhanced security, and efficient maintenance. With its advanced capabilities, this solution addresses key challenges, from complex maintenance requirements to theft prevention, while offering actionable insights through an integrated platform.



### OUR FEATURES

- Real-Time Device Status
- Electrical Condition Monitoring
- Battery Status Monitoring



### TECHNOLOGY



Energy Sensor



Fire/Smoke Detector



Humidity Sensor



## OUR CLIENT





## OUR PARTNER

 **TELTONIKA**

 **ThingsBoard**

 **ADF web**

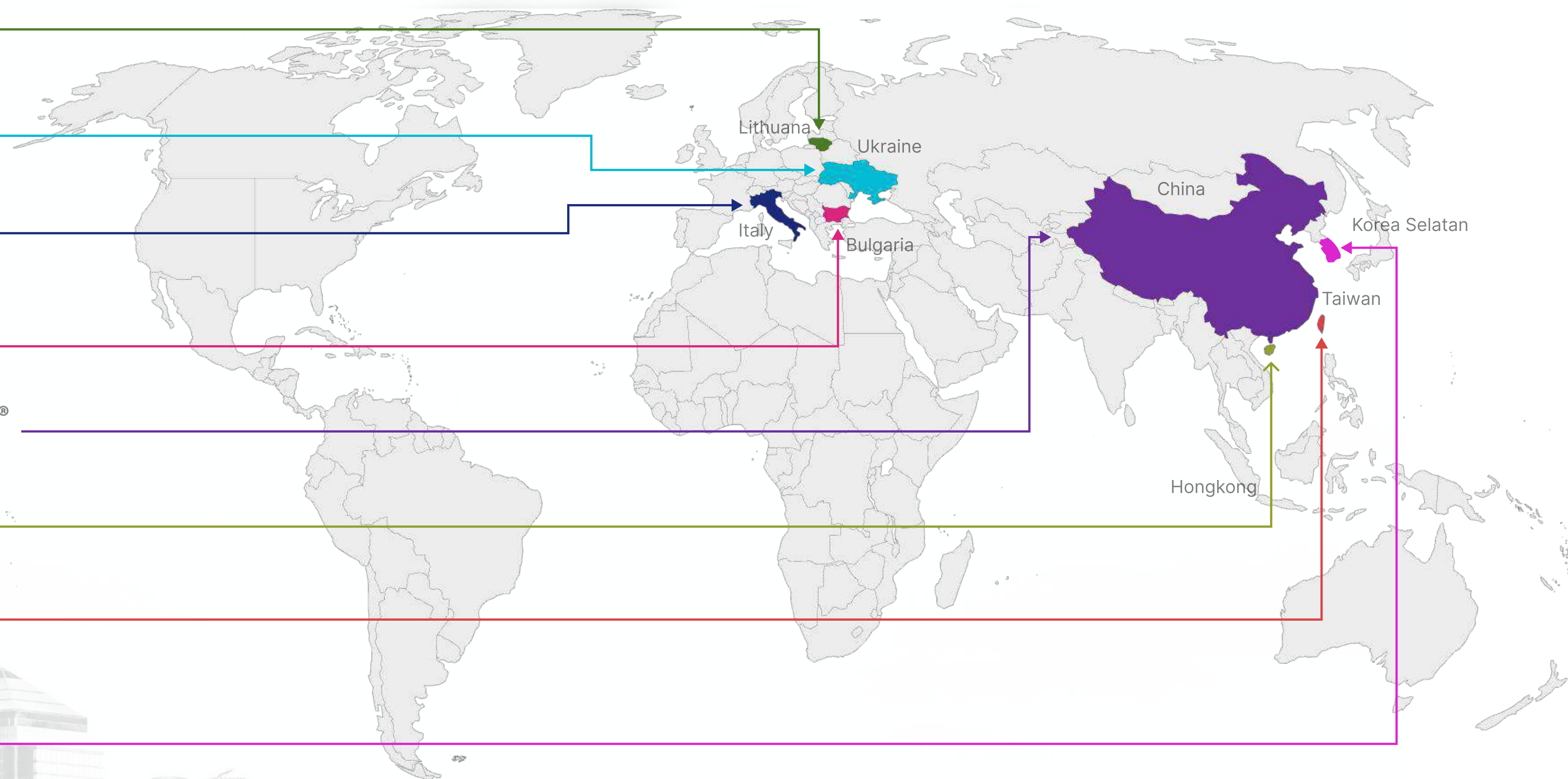
 **Shelly®**

 **HIKVISION®**

 **KERONG®**

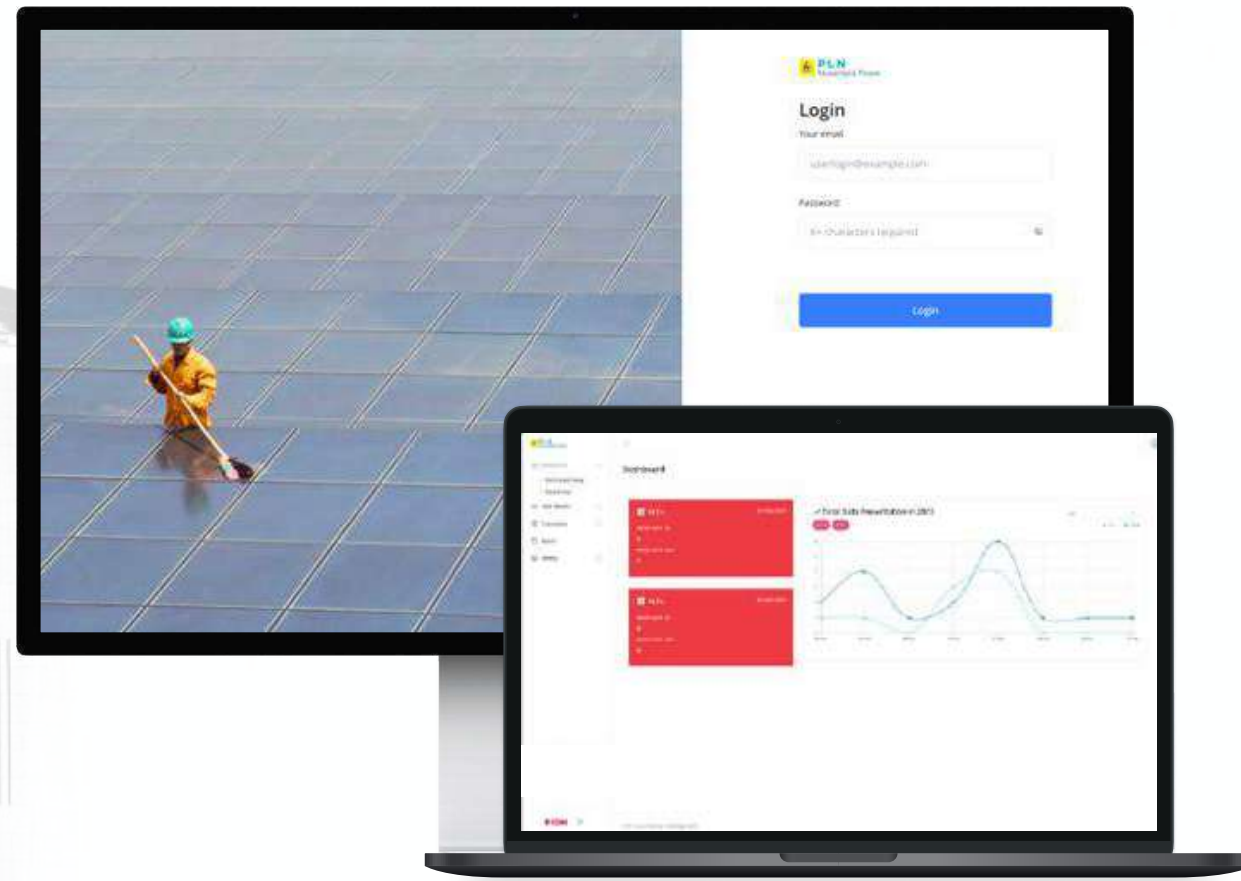
 **LILIN®**

 **PIA<sup>x</sup>**





## OUR PORTFOLIO



### Platform Identification (PION) Implementation For Red Zone Access Control



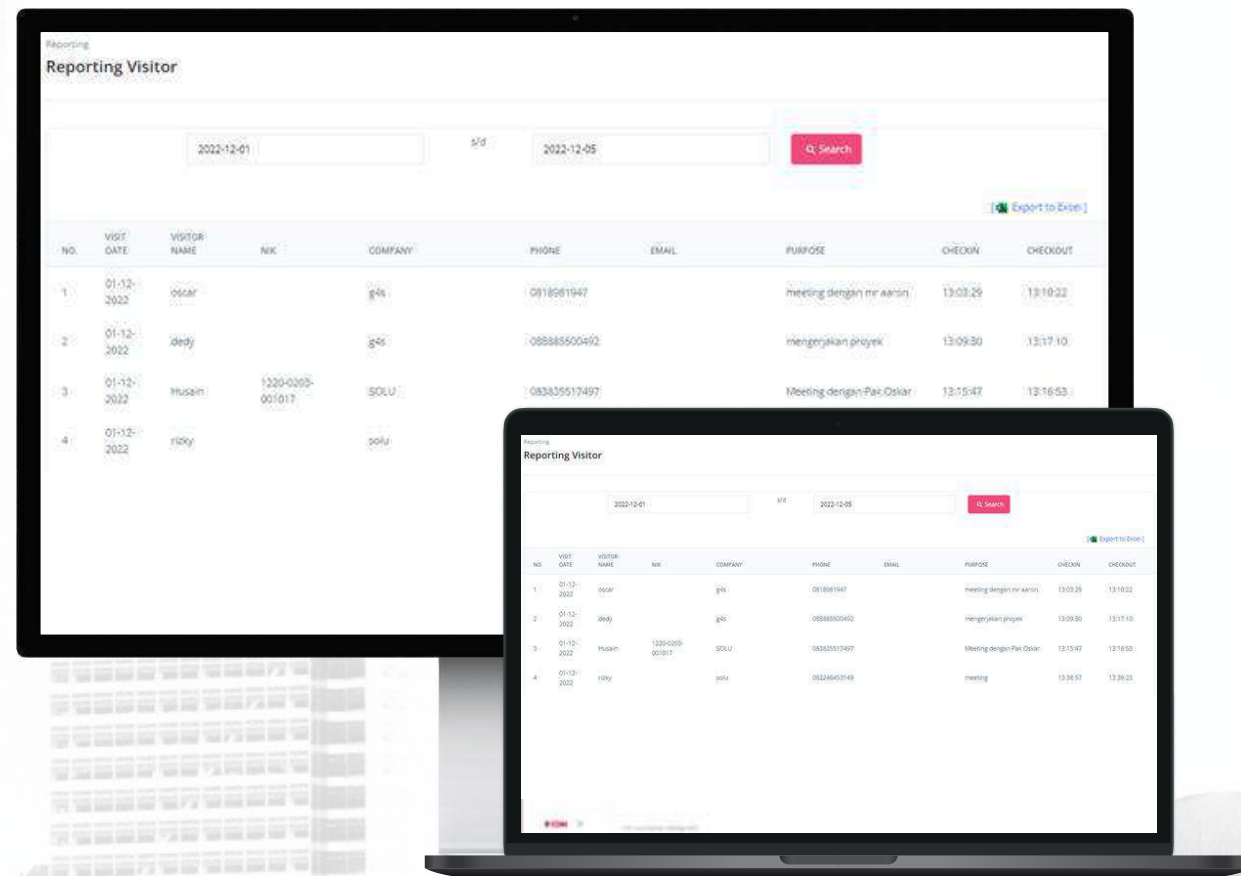
#### CHALLENGE

PT PLN Nusantara Power has a Generating Unit (UP) & Maintenance Service Unit (UPHAR) in Muara Karang, North Jakarta. Workers are required to wear Personal Protective Equipment (PPE) to enter the work area, but there are several employees seen not wearing complete PPE when entering the work area.



#### SOLUTION

To ensure that workers use PPE when entering the work area, the entrance gate is installed with a tripod gate equipped with access control that can recognize faces and scan PPE equipment such as safety helmets & safety shoes and include RFID for workers.



### Implementation Of Visitor Management System (VMS) And Handheld NFC Scanner



#### CHALLENGE

PT Freeport Indonesia has a smelter in Gresik Industrial Estate. Limited electricity and computer networks are obstacles to the implementation of access control gates in the area. G4S Security also experienced difficulties in recording people in and out.

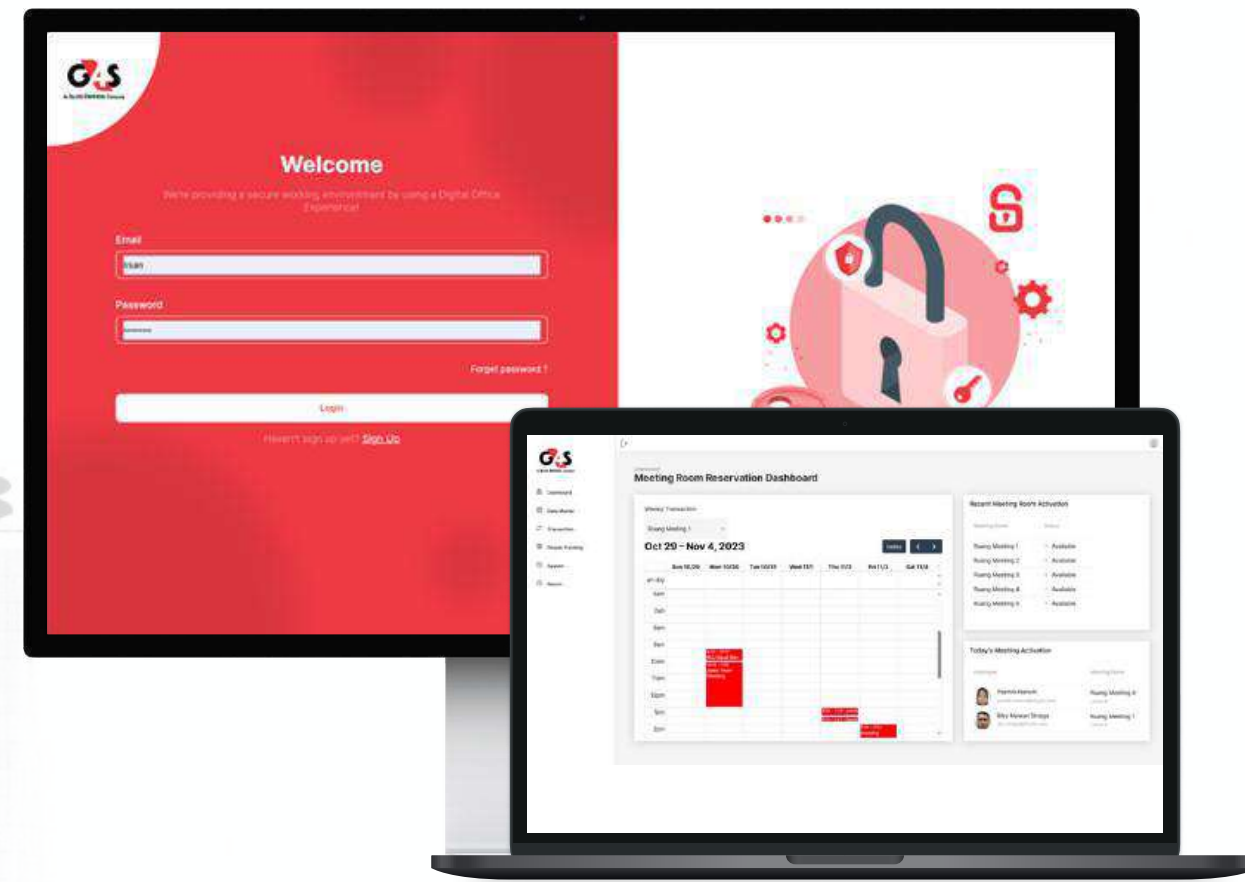


#### SOLUTION

To facilitate the recording of people in and out, a system is needed to record employee or guest visits, namely the Visitor Management System (VMS) and the use of Handheld as a substitute for Access Control used by security. Employees and guests will be given an RFID card during registration, then the card must be scanned by Security when the employee / guest passes through the door using a Handheld equipped with a VMS scanner application.



# OUR PORTFOLIO



## Serelo Product Implementation As Digital Office



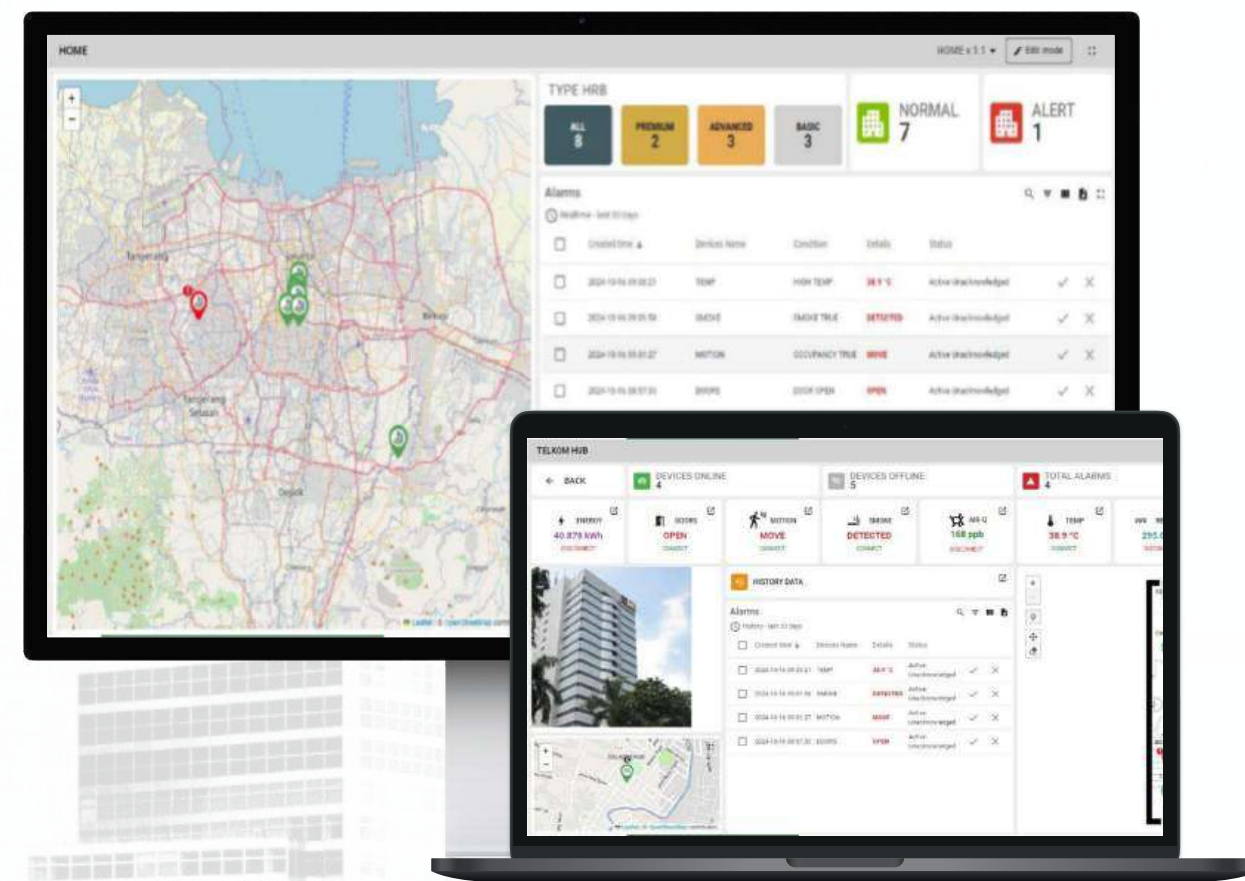
### CHALLENGE

PT G4S Security Services is moving its office to a new location. As a company engaged in the security sector, the G4S office must represent good security quality and maximum and efficient utilization of company resources.



### SOLUTION

To improve and ensure good security quality, G4S implements VMS supported by RFID and People Tracking to monitor office area conditions. Then implement Desk & Room Meeting Booking System to monitor the use of company assets.



### CHALLENGE

Managing buildings involves monitoring a wide range of parameters, such as electricity, water usage, and temperature. Traditionally, this requires manual inspections, which are time-consuming and prone to errors. The lack of automation in tracking these factors can lead to inefficiencies, increased operational costs, and missed opportunities for preventive maintenance.



### BENEFITS

- Cost Savings
- Predictive Maintenance
- Improved Efficiency
- Enhanced Accuracy



### PROJECT





## OUR PORTFOLIO



### Smart Building Management

#### CHALLENGE

Energy management involves monitoring key parameters like energy consumption, temperature, and potential hazards. Managing these manually is time-consuming, prone to errors, and can lead to inefficiencies, higher costs, and delayed identification of safety risks.

#### BENEFITS

- Efficient Energy Management
- Cost Savings
- Early Hazard Detection
- Improved Equipment Lifespan

#### PROJECT



Korlantas



### Soft Skill Training Program Evaluation Analysis

#### CHALLENGE

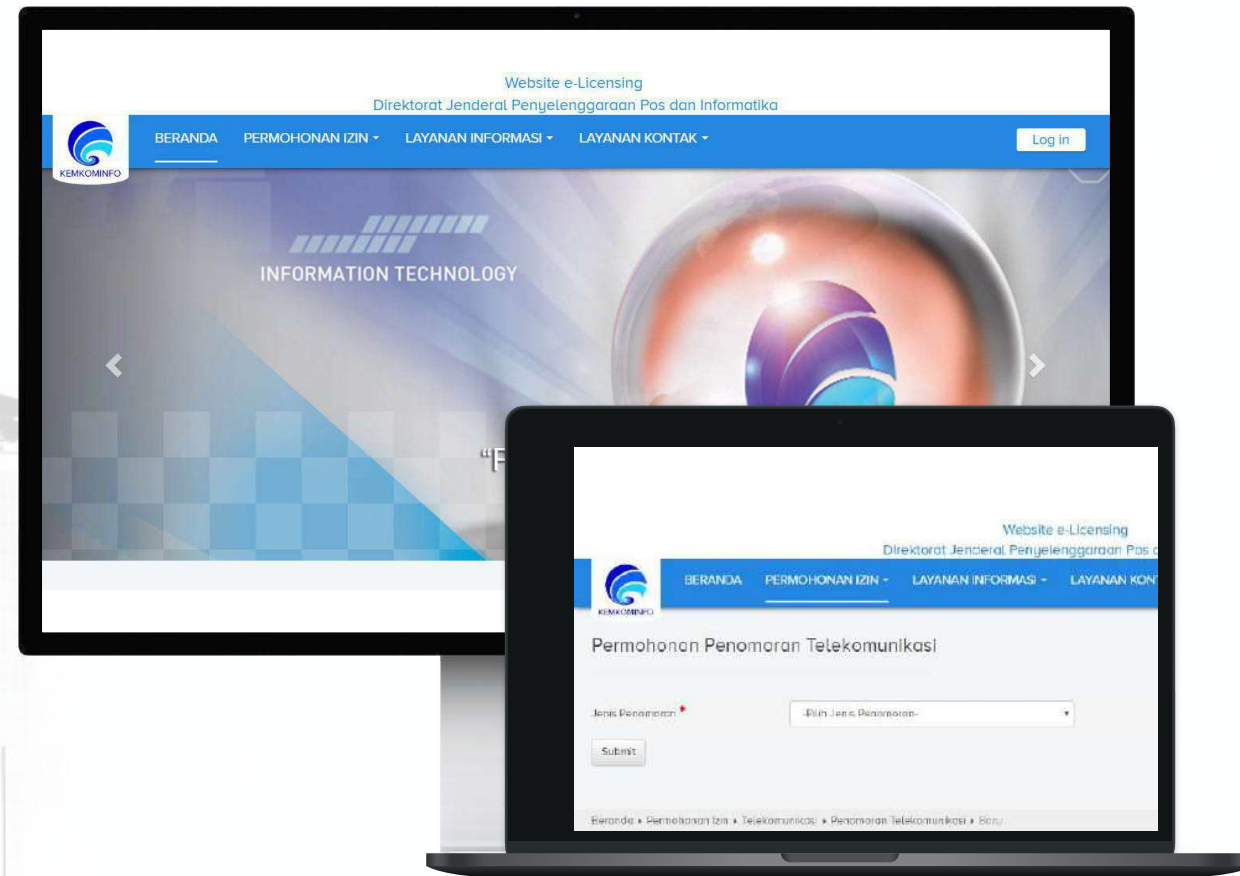
Human resources (HR) at the Ministry of Health are continuously monitored by the PPSPDM (Health Human Resources Development Agency). To support this monitoring, members of the PPSPDM at the Ministry of Health must possess the skills and capabilities to evaluate HR comprehensively.

#### SOLUTION

To enable PPSPDM members at the Ministry of Health to conduct evaluations, a training program will be provided to teach them how to perform analysis and evaluations effectively.



## OUR PORTOFOLIO



KOMINFO

### Project Management Office Dashboard



#### CHALLENGE

The execution of activities must align with the plan, so it's essential to closely monitor the outlined strategy to prevent any deviations, particularly activities that consume excessive resources. By ensuring strict adherence to the plan, we can drive efficiency, maximize resource utilization, and deliver on commitments, enhancing overall performance and customer satisfaction.



#### SOLUTION

To support planning activities and monitor implementation, the best solution is an activity budget management system and a dashboard that simplifies monitoring using the established parameters based on the plan. This approach ensures better control, data-driven decision-making, and the ability to track performance in real-time, ultimately driving more efficient operations and successful outcomes.



KOMINFO

### Online Licensing Services System For Postal And Informatics Operations



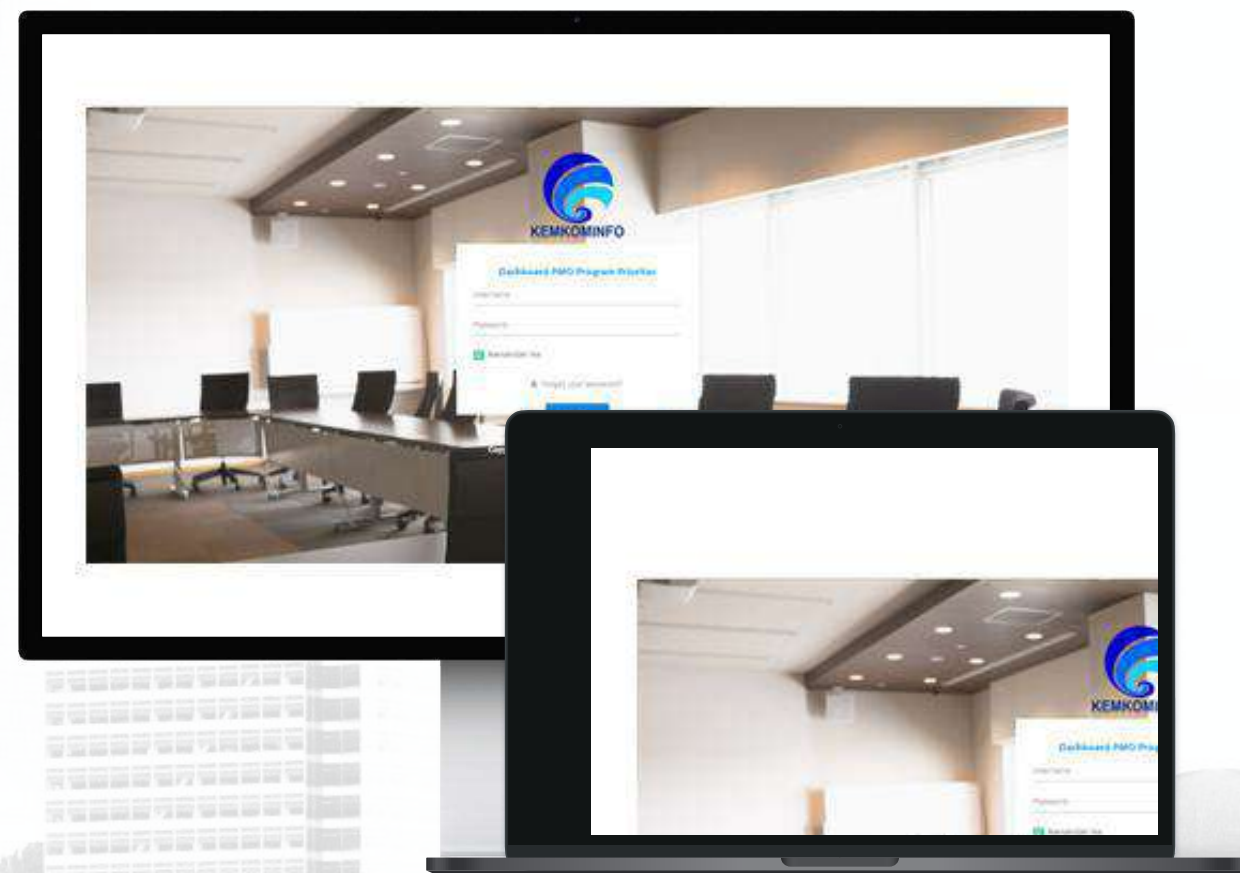
#### CHALLENGE

To manage licensing, supporting documents are required for the evaluation process before the issuance of the license. Additionally, the process needs to be monitored to ensure that the issuance of licenses aligns with the application submission date. However, since the process still relies on physical documents and manual file transfers, many licenses are issued later than expected.



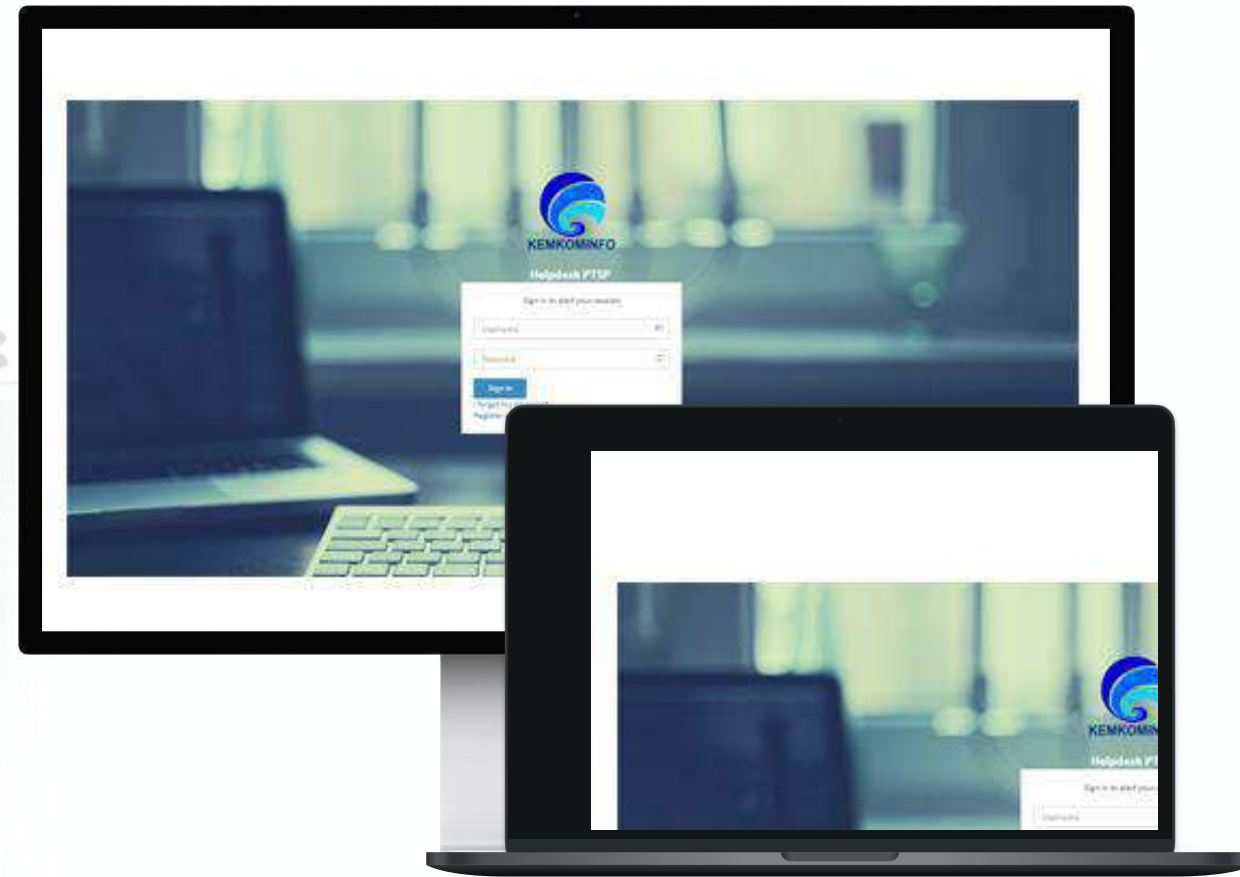
#### SOLUTION

An online licensing system has become a necessity to create excellent service. Therefore, a solution is required through the development of the licensing website for the Directorate General of PPI (Ditjen PPI) and the centralization of licensing services at [pelayananprimaditjenppi.go.id](http://pelayananprimaditjenppi.go.id), managed by PT Solu Filantropi Teknologi.





## OUR PORTFOLIO



KOMINFO

### Helpdesk Application



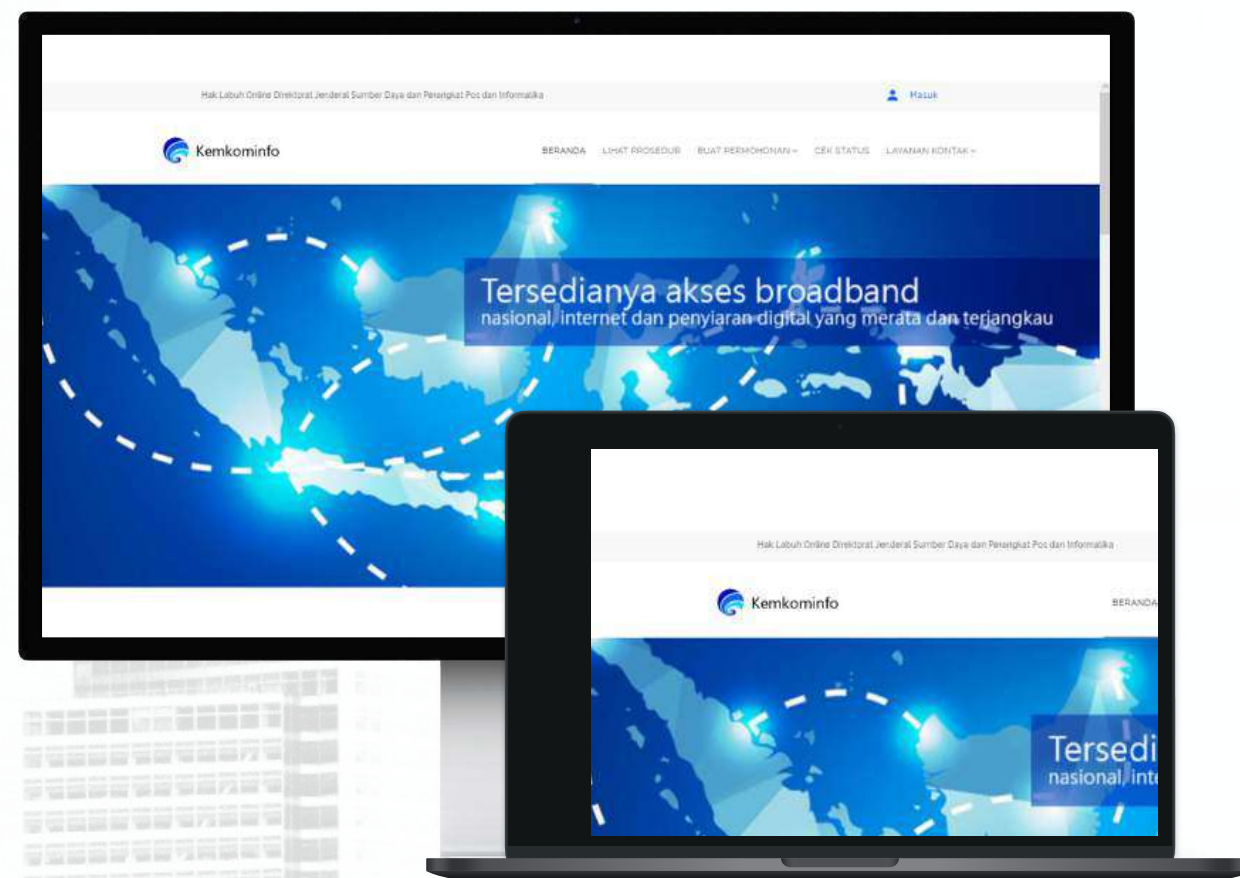
#### CHALLENGE

As a service platform for receiving inquiries or complaints about its services, manual complaint handling cannot accommodate all complaints due to limitations in space and time.



#### SOLUTION

To overcome these limitations, the best solution is to implement a helpdesk system to receive all complaints from license applicants. The application is developed using PHP programming language.



KOMINFO

### Online Licensing Service System For Landing Rights



#### CHALLENGE

Manual license applications are time-consuming and labor-intensive, and the lengthy process often leads to complaints from applicants.

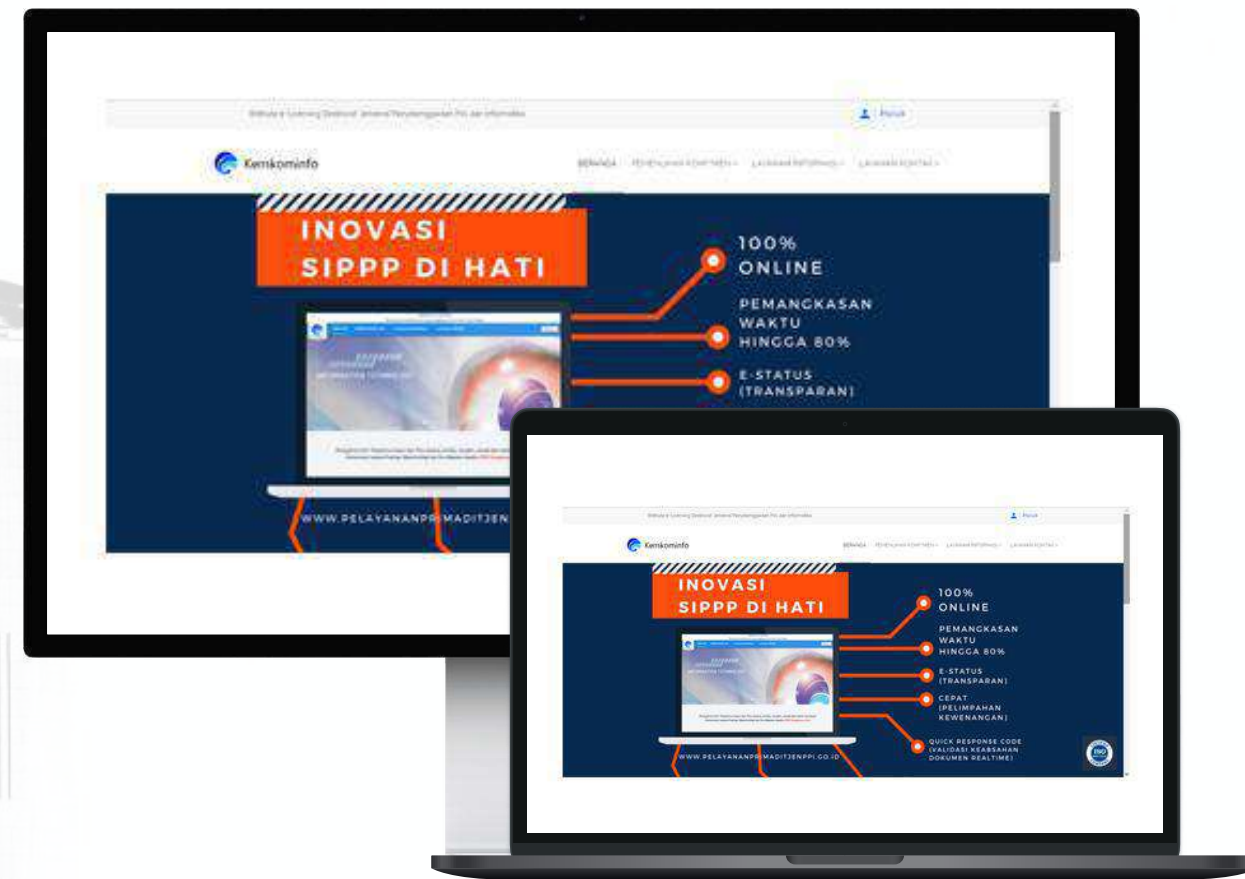


#### SOLUTION

The spirit of development to consistently provide excellent service has driven the Directorate General of SDPPI to digitize available licensing processes into the Online Licensing Application for satellite use.



## OUR PORTFOLIO



KOMINFO

SIPPPDIHATI



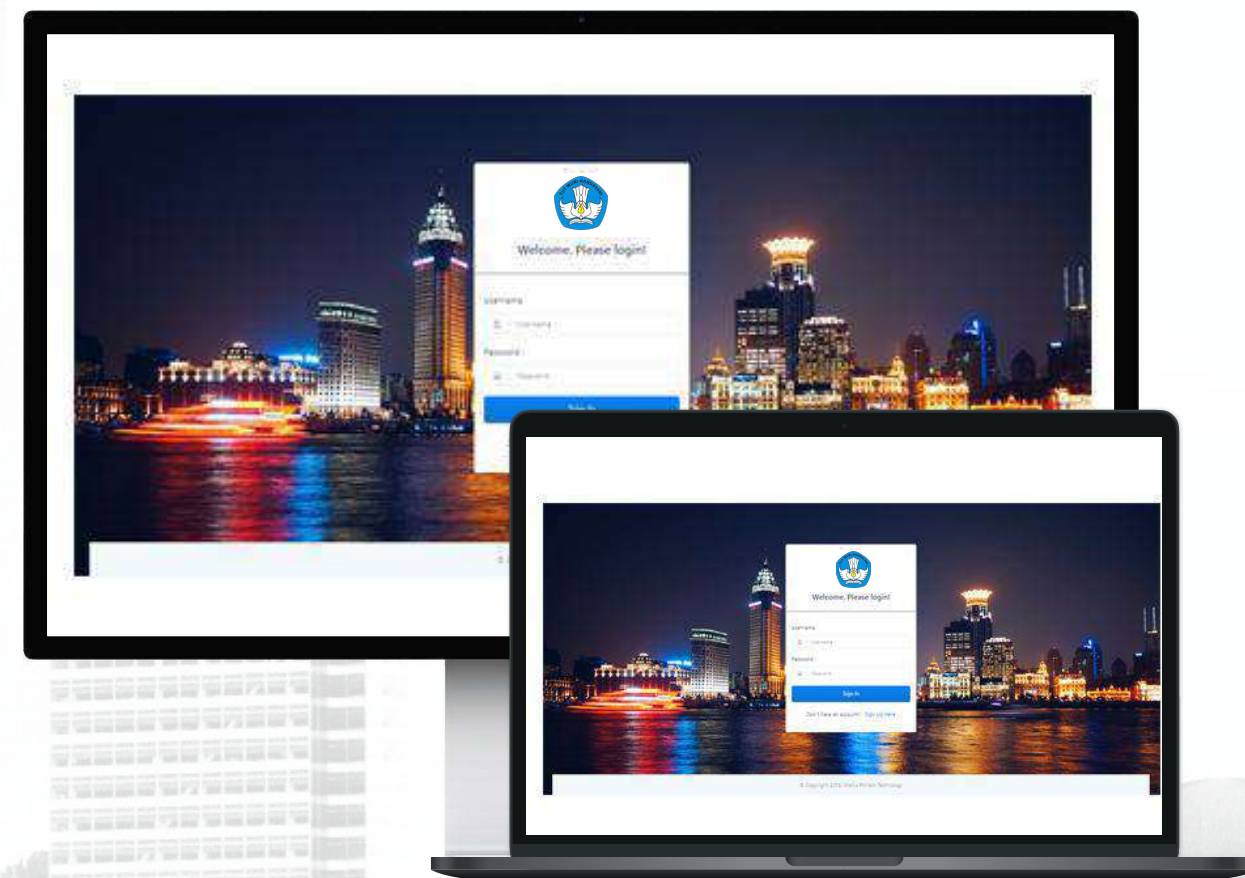
### CHALLENGE

The development of licensing in Indonesia must progress, which is why the President has directed the implementation of OSS (Online Single Submission). The previous licensing system was not connected to OSS or still consisted of applications that were not coordinated with any other systems.



### SOLUTION

In its role of providing services and maintaining the performance of the licensing system, the Ministry of Communication and Informatics (Kominfo) needs to develop a cover license module and integrate the commitment of the Online Licensing Application for Postal and Informatics Operations based on OSS, ensuring that it runs optimally at all times.



Kementerian Pendidikan,  
Kebudayaan, Riset, Dan Teknologi

CEGAH



### CHALLENGE

BOS (School Operational Assistance) funds are crucial for schools and education, and they are distributed to schools across Indonesia. However, the issue is that the monitoring system is not yet optimal, as there is a significant amount of invalid data regarding the use of BOS funds.



### SOLUTION

The Inspectorate General of the Ministry of Education and Culture has initiated transparent monitoring of BOS funds, requiring a solution for the development of the Regional Transfer Fund Monitoring Application (CEGAH).



## OUR PORTFOLIO



### PPUB Application



#### CHALLENGE

Business processes in every organization will inevitably evolve with the times. Similarly, for the PPUB application, the business process must still be executable through this application. However, with changes in the business process, the application may become difficult to use.



#### SOLUTION

Digitalization alone is not enough; a system must also undergo maintenance and development to consistently provide excellent service. This includes the maintenance of FrontEnd and BackEnd modules of E-PPUB, as well as the development of both FrontEnd and BackEnd modules.



### IT Managed Service Danapaint



#### CHALLENGE

As a large company, the information systems and networks at Danapaint are extremely important. The issue is that Danapaint currently lacks a dedicated team to manage these systems and networks, which creates a high risk of malfunctions or failures in the systems and networks.



#### SOLUTION

The need for resources with the right skills and understanding of business processes, without requiring an investment in internal resources, makes managed services the ideal solution. This includes Managed Service ERP, ERP application maintenance for QAD and Orlansoft, and network infrastructure maintenance.



## OUR PORTFOLIO



**Polri**

### Procurement Of Smart Power Monitoring Units



#### CHALLENGE

The Indonesian National Police (Polri) has CCTV cameras installed on roads throughout the country, which are used to monitor traffic. These CCTV systems consume electricity, and the electricity usage is billed by PLN. The issue is that this electricity usage is not being monitored, and the bills are quite large, raising the question of whether the charges are in line with the actual electricity consumption of the CCTV systems.



#### SOLUTION

The Internet of Things (IoT) is the ideal solution to address the needs of the Traffic Corps (Korlantas) in monitoring CCTV devices installed on roads across cities in Indonesia. With an informative dashboard display and robust IoT sensors in the field, the procurement of 517 units of Smart Power Monitoring sensors will enable efficient tracking and management of electricity consumption.



**BMKG**

### Maintenance Of The BMKGSoft System



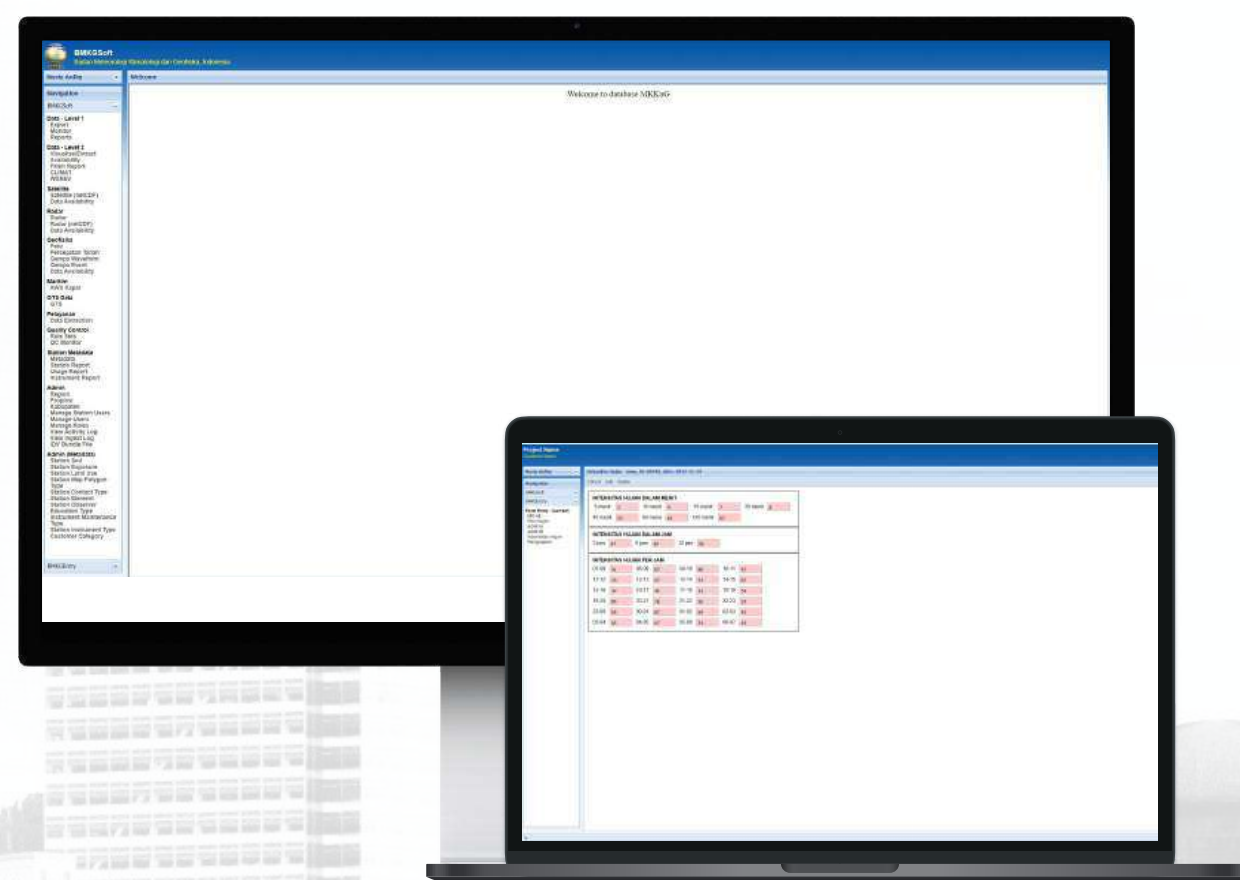
#### CHALLENGE

BMKG has a meteorological recording system called BMKGSoft, which was developed by a foreign company. The issue is that the maintenance process faces challenges in terms of cost, time, and distance. This poses a risk of malfunction for BMKGSoft, which is critical for BMKG's operations.



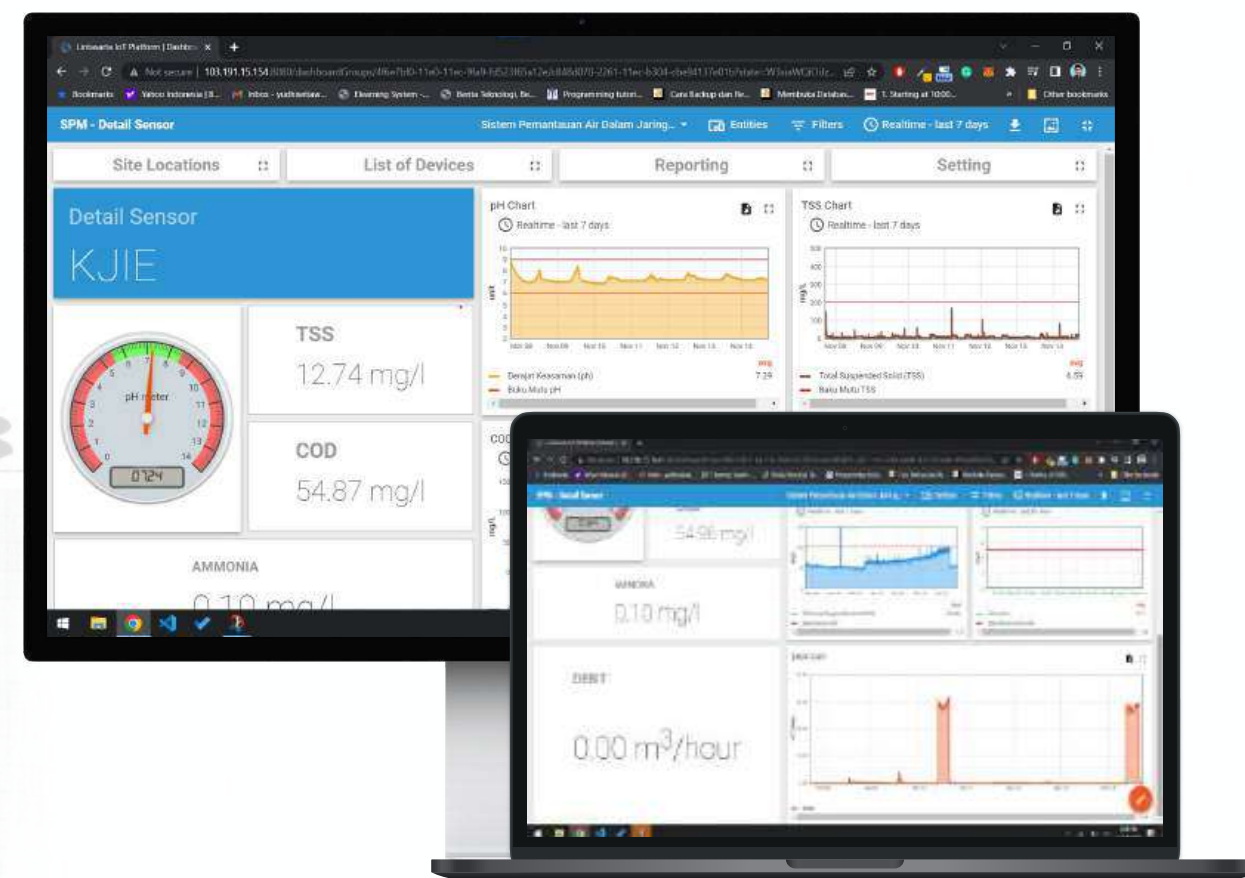
#### SOLUTION

Maintaining system performance is a must for BMKG, requiring the system to consistently operate at optimal performance. This includes activities such as Corrective, Adaptive, and Perfective maintenance, as well as knowledge sharing to ensure continuous improvement and reliable system operation.





## OUR PORTFOLIO



### Lintasarta IoT Platform



#### CHALLENGE

Lintasarta has sensors that support IoT as part of its product offerings, including work related to Water Waste Management. The issue is that these sensors require a platform for effective management and monitoring.



#### SOLUTION

Water waste management becomes easier with the Internet of Things (IoT) solution. This includes the installation and configuration of the Thingsboard IoT platform, as well as the distribution of the Perpetual License for Thingsboard Professional Edition.



### Aplikasi ERP Prima Duta Nusantara



#### CHALLENGE

The main challenge is digitizing the company's operations. The company does not yet have a dedicated system for data entry or recap, from the procurement process to sales. Data across different departments is still fragmented, leading to a high error rate in the data.

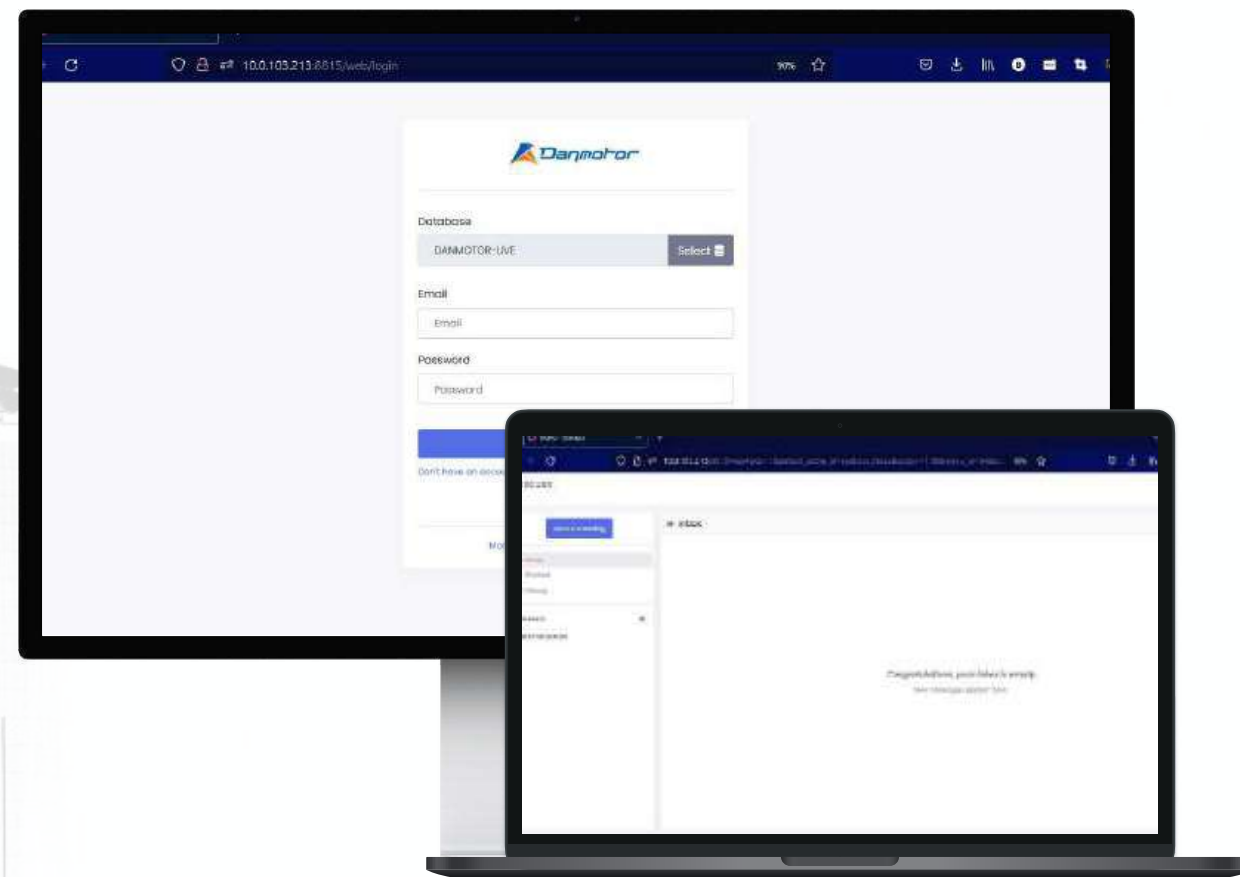


#### SOLUTION

To support data entry and integration, the implementation of an ERP system is necessary to meet the company's operational needs. The ERP application used is Adempiere. The modules implemented include Purchase, Inventory, Manufacturing, Sales, and Accounting.



## OUR PORTFOLIO



### Danmotor Indonesia ERP Application



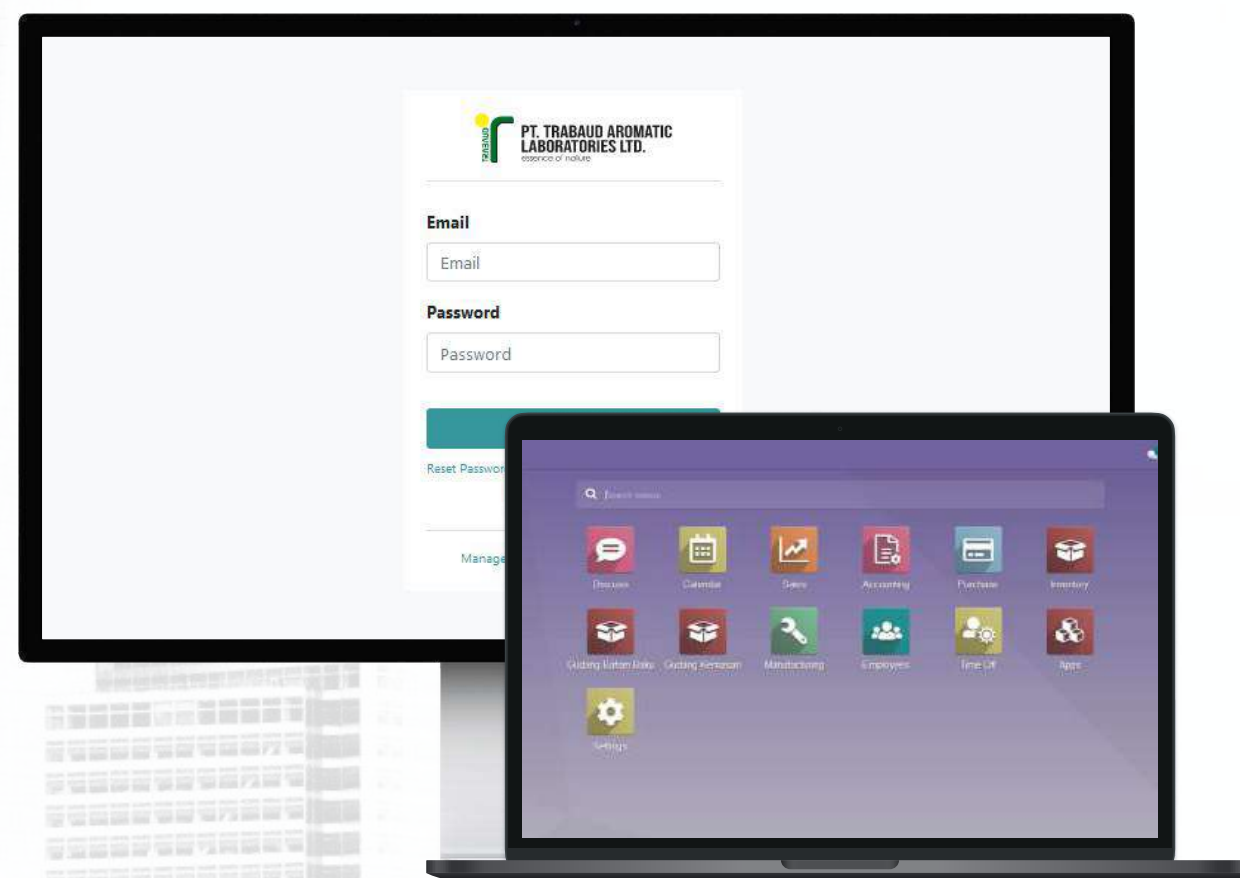
#### CHALLENGE

Orlansoft is the ERP application used by PT Danmotor Indonesia. The lack of maintenance has made it difficult for the application to adapt to user needs. Additionally, since Orlansoft is not an open-source application, it is challenging to develop and customize further.



#### SOLUTION

We provide a solution for migrating the system to a more universally applicable technology, making it easier for anyone to adjust the application. The ERP application used is Odoo. The modules implemented are the same as those in the previous ERP application, and they are further developed according to user needs.



### Trabaud Aromatic Laboratories

### Trabaud ERP Application



#### CHALLENGE

The main challenge is digitizing the company's operations. The company does not yet have a dedicated system for data entry or recap, from the procurement process to sales. Data across different departments is still fragmented, leading to a high error rate in the data. Additionally, the calculation of COGS (Cost of Goods Sold) faces difficulties due to manual calculations, and the production type is Process Manufacturing, which adds complexity.

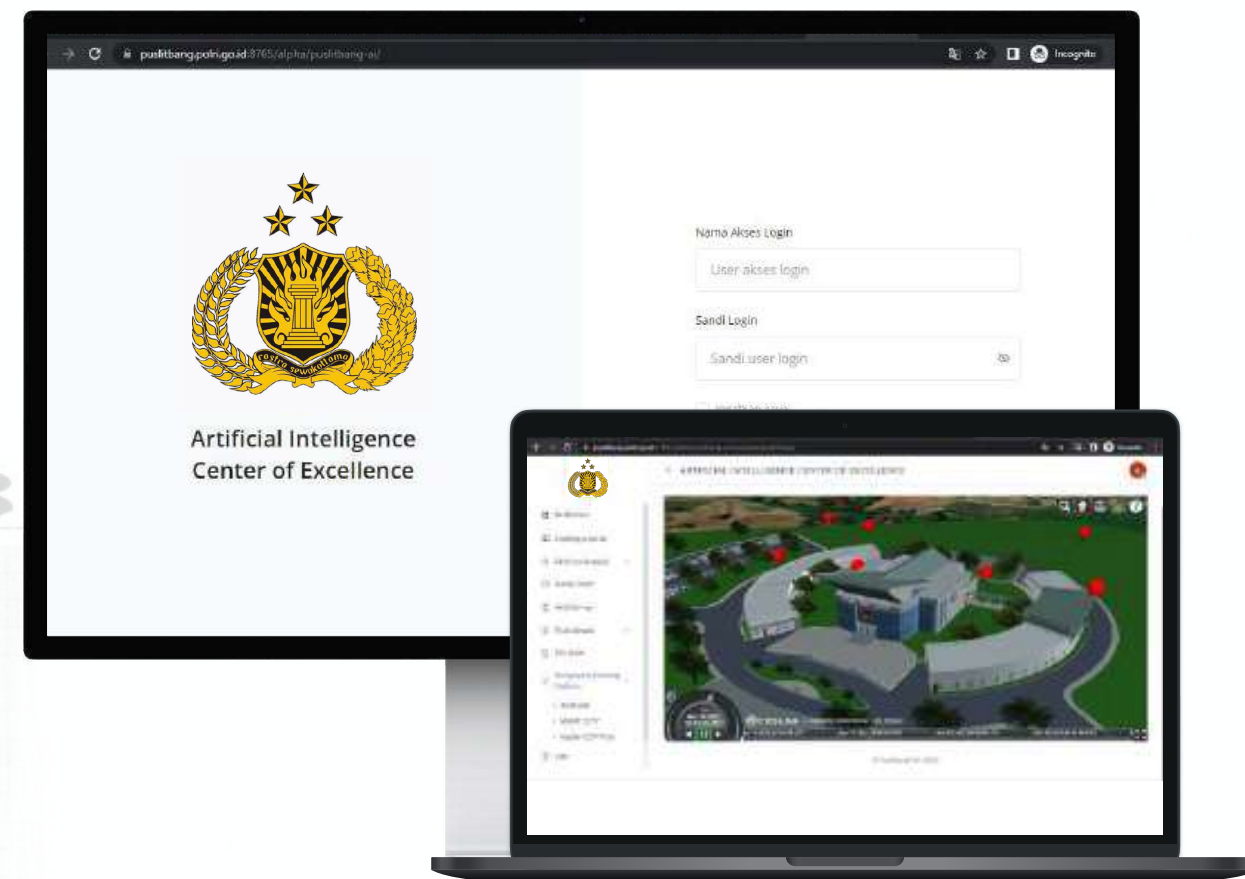


#### SOLUTION

To support data entry and integration, the implementation of an ERP system is necessary to meet the company's operational needs. The ERP application used is Odoo. The implemented modules include Purchase, Inventory, Manufacturing, Sales, HR, and Accounting.



## OUR PORTFOLIO



Polri

Procurement Of Equipment And Application



### CHALLENGE

Survey data is abundant, so if the processing method is not accurate, it can lead to misinformation. The types of data used are also varied, particularly qualitative data, which needs to be assigned a value scale for proper analysis.



### SOLUTION

Strengthening the AI Center of Excellence: Installation of a Machine Learning platform for qualitative and quantitative survey data; implementation of modeling with spatial and graphic data.



### CHALLENGE

As a company in the human resources (HR) sector, PT Telefast Indonesia has taken steps to create a digital product related to HR, named HR-KU. The issue is the shortage of programming experts to develop the product.



### SOLUTION

SOLU's experts are ready to assist in the development of HR-KU. SOLU provides comprehensive support for the entire HR-KU development process. The experts involved include a Project Manager, System Analyst, Programmer, QC, and Technical Writer.



—○ THANK YOU ○—

## ADDRESS

Jl. Kav. Polri Blok G No.49, RT 09 RW 06, Jagakarsa,  
South Jakarta, DKI Jakarta 12620

## PHONE

+62 812 9292 0884

## E-MAIL

info@solu.co.id

## WEB

solu.co.id

